



# Alfred E. Rush Academy

GRADES  
**7-12**

ENROLLMENT  
**110**

CLASS SIZE  
**15**  
AVERAGE

STUDENT TO  
TEACHER  
RATIO  
**15:1**

PRINCIPAL  
**Cedrick  
Kennedy**

1201 E Ashby Rd  
Quincy SC 29506  
843-664-4156 O  
843-629-3296 F

BELIEF **Diligence and Perseverance**

[f1s.org/alfrederush](http://f1s.org/alfrederush)

## NOTEWORTHY

### Our Mission

To cultivate the will to work, the character to hope, and the endurance to finish.

### Our Graduates

We celebrated 21 high school graduates in 2018-19 who earned a collective 373 credits.

### Our Goals for Our Students

- Persist Through Every Endeavor
- Manage Impulsivity
- Respect School, Each Other & Property
- Work Diligently on All Assignments
- Exercise Etiquette at All Times
- Accept Consequences for Their Actions
- Do Their Best to Serve as Role Models For Others
- Maintain an Inviting School Atmosphere

## ACADEMIC EXCELLENCE

### Learning Environment

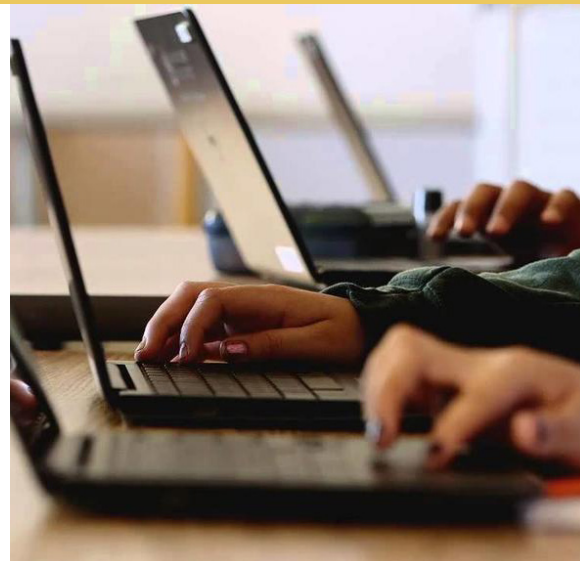
- Small, blended learning environment
- Students work at their own pace
- Opportunities to catch up for those who fall behind
- Flexible attendance hours

### Electives

- Fundamentals of Computing, Fundamentals of Website Design, Physical Education 1 & 2

### Faculty & Staff

We are a committed team of 14 Certified Teachers; 40% hold advanced degrees



MASCOT **Phoenix**

COLORS



FOUNDED **2012**

# COMMUNICATIONS & COMMUNITY INVOLVEMENT

## Communications

Clear, concise, and consistent communication is our goal. We share information through the USPS, phone calls, emails, and social media. We also utilize Blackboard text messaging and encourage families to use the F1S app.

## Community Involvement

We're fortunate to work with our community to offer a Flex-Day Friday program where business owners, retired teachers, coaches, pastors, and other pillars of the community visit to share inspirational stories and messages with our students.

## SAFETY

The safety of our students is a top priority. The doors to our School remain locked at all times, and we utilize an automated check-in system for visitors. Students are searched daily before entering the School.

